

2.5 ACRE CORNER LOT FOR SALE

2560 Irwinton Rd.
Milledgeville, GA 31061



Lot Size: 2.5 acre corner lot

Frontage: 330'

Utilities: Electric, county water & septic

Zoning: None - located in the county

Traffic: 6,010 vpd

Neighbors: Central State Hospital, Scenic Mountain RV Park, Dollar General

- Notes:**
- Property is located at the corner lot of Irwinton Rd and Thomas Field Rd.
 - It is 100 yards from the Central Shop Entrance at Central State Hospital.
 - Ideal location for convenience store, retail store, laundromat or multi-family.
 - There are several structures on the property including a 2,000 sf house built in the 1900's, shed and mobile home.
 - Highest and best use is to be redeveloped.

~~Sale Price: \$119,000~~

Reduced Price: \$99,000

**FOR MORE
INFORMATION
CONTACT**

Trip Wilhoit, CCIM, ALC
478-746-9421 (O)
478-960-4080 (C)
trip@fickling.com

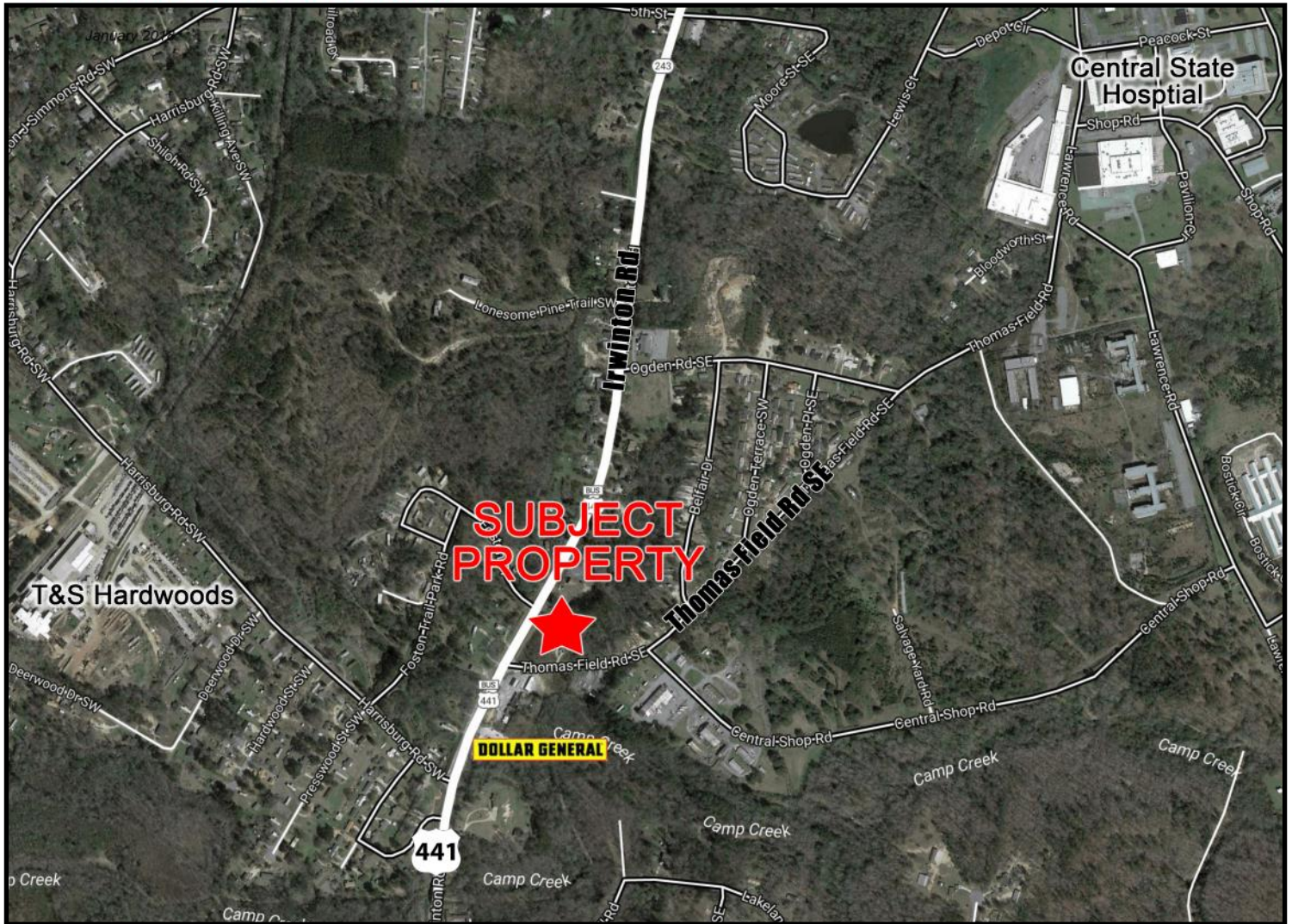
Patty Burns, CCIM, ALC
478-746-9421 (O)
478-951-5100 (C)
patty@fickling.com

georgiacommercialrealestate.net | commercial.fickling.com

577 Mulberry St, Suite 1100 * P.O. Box 310 * Macon, GA 31202 | Phone (478) 746-9421 | Fax (478) 742-2015
This information is from resources deemed to be reliable, no warranties or guarantees for accuracy are made by Fickling and Company

2.5 ACRE CORNER LOT FOR SALE

2560 Irwinton Rd.
Milledgeville, GA 31061



2018 Demographics	5 Miles	10 Miles	20 Miles
Population	27,019	43,322	80,295
Avg. HHI	\$47,051	\$56,708	\$60,220
Median Age	33.6	35.4	38.9

FOR MORE INFORMATION CONTACT

Trip Wilhoit, CCIM, ALC
478-746-9421 (O)
478-960-4080 (C)
trip@fickling.com

Patty Burns, CCIM, ALC
478-746-9421 (O)
478-951-5100 (C)
patty@fickling.com

georgiacommercialrealestate.net | commercial.fickling.com

577 Mulberry St, Suite 1100 * P.O. Box 310 * Macon, GA 31202 | Phone (478) 746-9421 | Fax (478) 742-2015

This information is from resources deemed to be reliable, no warranties or guarantees for accuracy are made by Fickling and Company