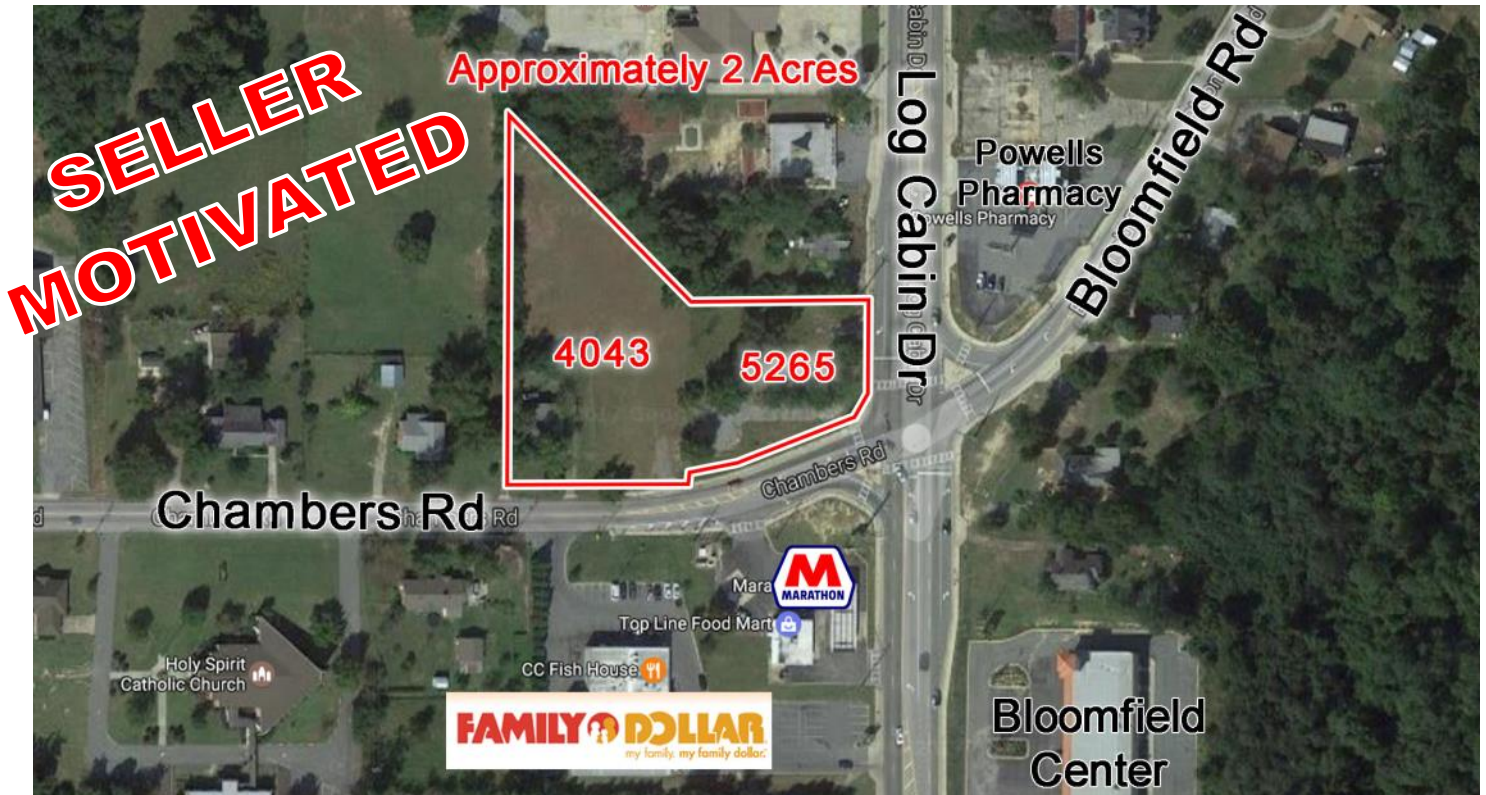


TWO COMMERCIAL PARCELS AVAILABLE

4043 Chambers Rd & 5265 Log Cabin Dr. * Macon, GA



Location: Located at the intersection of Log Cabin Drive and Chambers Road in West Bibb County

Description: Two lots totaling approximately 2 Acres

Building Size: Duplex that can be demolished

Traffic Count: 8,150 VPD Log Cabin Dr.
7,200 VPD Chambers Rd.

Zoning: C-1

Utilities: All utilities available

Nearby Businesses: Marathon Convenience Store, Family Dollar and Powell's Pharmacy

2019 DEMOGRAPHICS	1 mile	3 miles	5 miles
Population	5,514	36,951	86,183
Average HH Income	\$34,994	\$38,551	\$51,291
Median Age	29.4	32.7	34.3

REDUCED PRICE: \$150,000

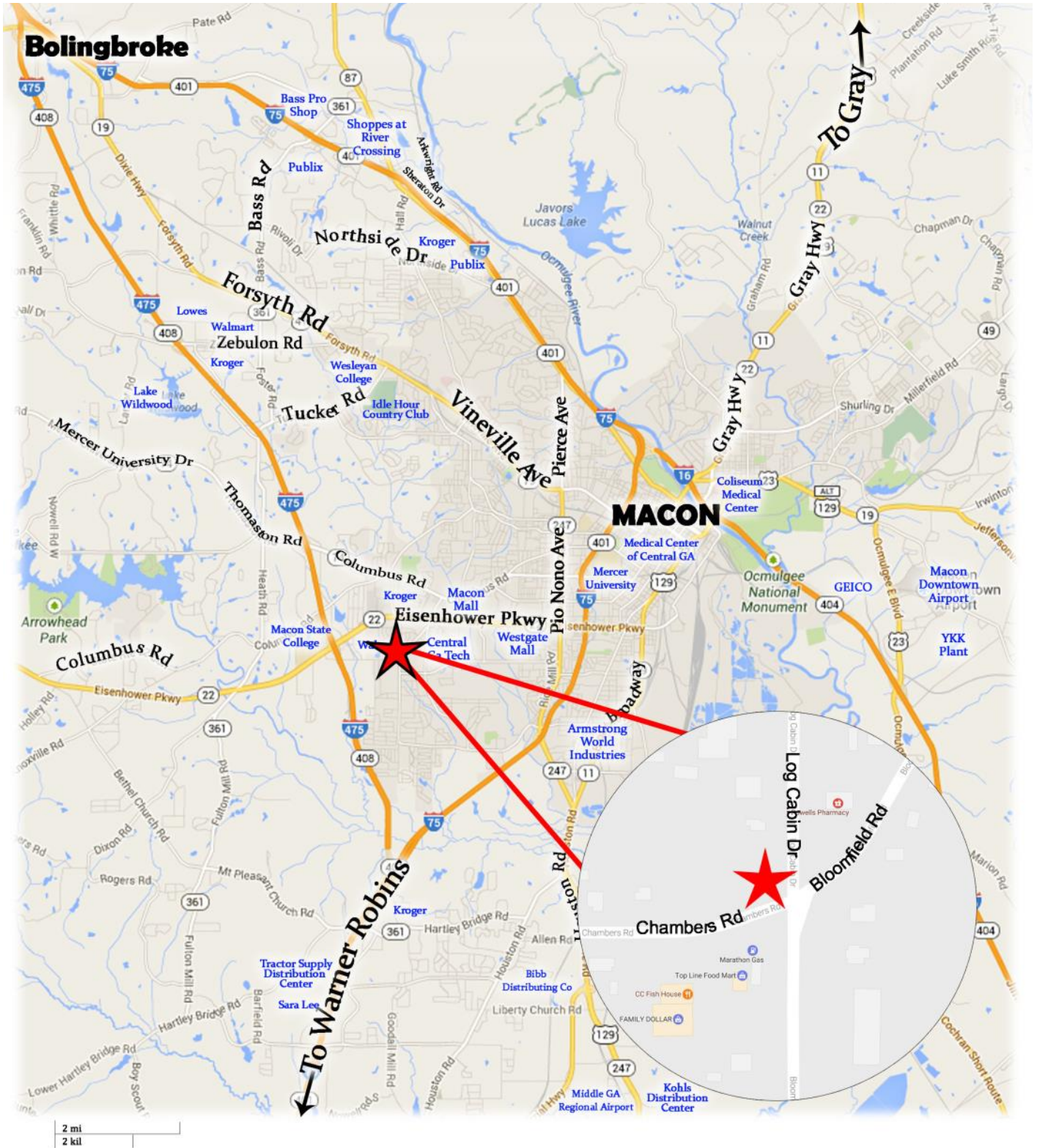
~~SALE PRICE: \$250,000~~



Larry Crumbley
CCIM, CPM, SIOR
Cell: 478-737-3381
Email: lcrumbley@fickling.com
Web: www.lcrumbley.com

Commercial Division
577 Mulberry Street
Suite 1100
Macon, GA 31201
Phone: 478-746-9421
www.fickling.com

TWO COMMERCIAL PARCELS AVAILABLE 4043 Chambers Rd & 5265 Log Cabin Dr. * Macon, GA



Larry Crumbley
CCIM, CPM, SIOR
Cell: 478-737-3381
Email: lcrumbley@fickling.com
Web: www.lcrumbley.com

Commercial Division
577 Mulberry Street
Suite 1100
Macon, GA 31201
Phone: 478-746-9421
www.fickling.com

TWO COMMERCIAL PARCELS AVAILABLE 4043 Chambers Rd & 5265 Log Cabin Dr. * Macon, GA



Larry Crumbley
CCIM, CPM, SIOR
Cell: 478-737-3381
Email: lcumbley@fickling.com
Web: www.lcumbley.com

Commercial Division
577 Mulberry Street
Suite 1100
Macon, GA 31201
Phone: 478-746-9421
www.fickling.com

This information is from resources deemed to be reliable, no warranties or guarantees for accuracy are made by Fickling and Company