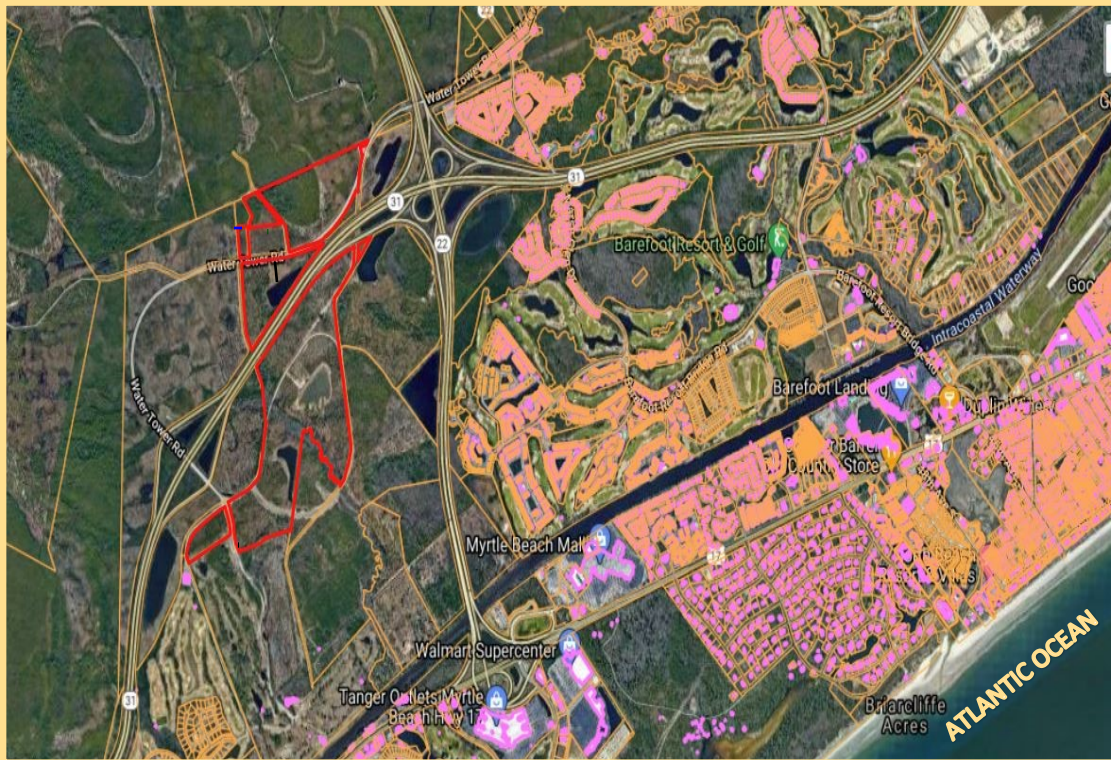




Apache Properties

Commercial Real Estate



ACREAGE AVAILABLE

ZONING:
COMMERCIAL,
DISTRIBUTION,
SINGLE FAMILY RESIDENTIAL,
&
MULTI-FAMILY RESIDENTIAL

Location:
Highway 31
&
Water Tower Road
North Myrtle Beach, SC

**ALL REMAINING
ACREAGE FOR
COMMERCIAL
USE ONLY**

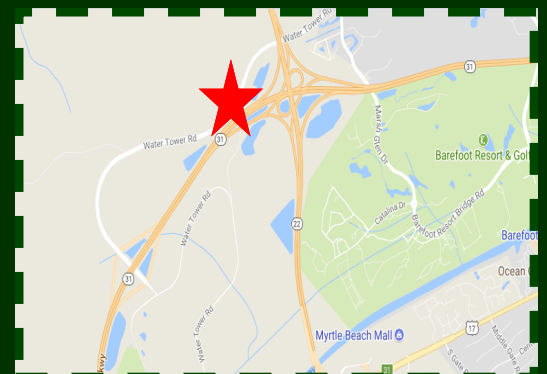
- This property is perfect for future residential and commercial plans. Close proximity to Barefoot Resort Developments.
- Less than 4 miles to the beautiful beaches of North Myrtle Beach.
- Less than 5 miles to shopping with Tanger Outlets, Colonial Mall, and Arcadian Shores Commons. Along with many restaurants located on Restaurant Row.
- Horry County TMS# 155-00-01-054 PIN# 38900000003
Horry County TMS# 155-00-01-054 PIN# 38900000234

Please Call Agent for Pricing

Contact Us At:

Phone: 843-449-0441

E-Mail: info@wacclt.com

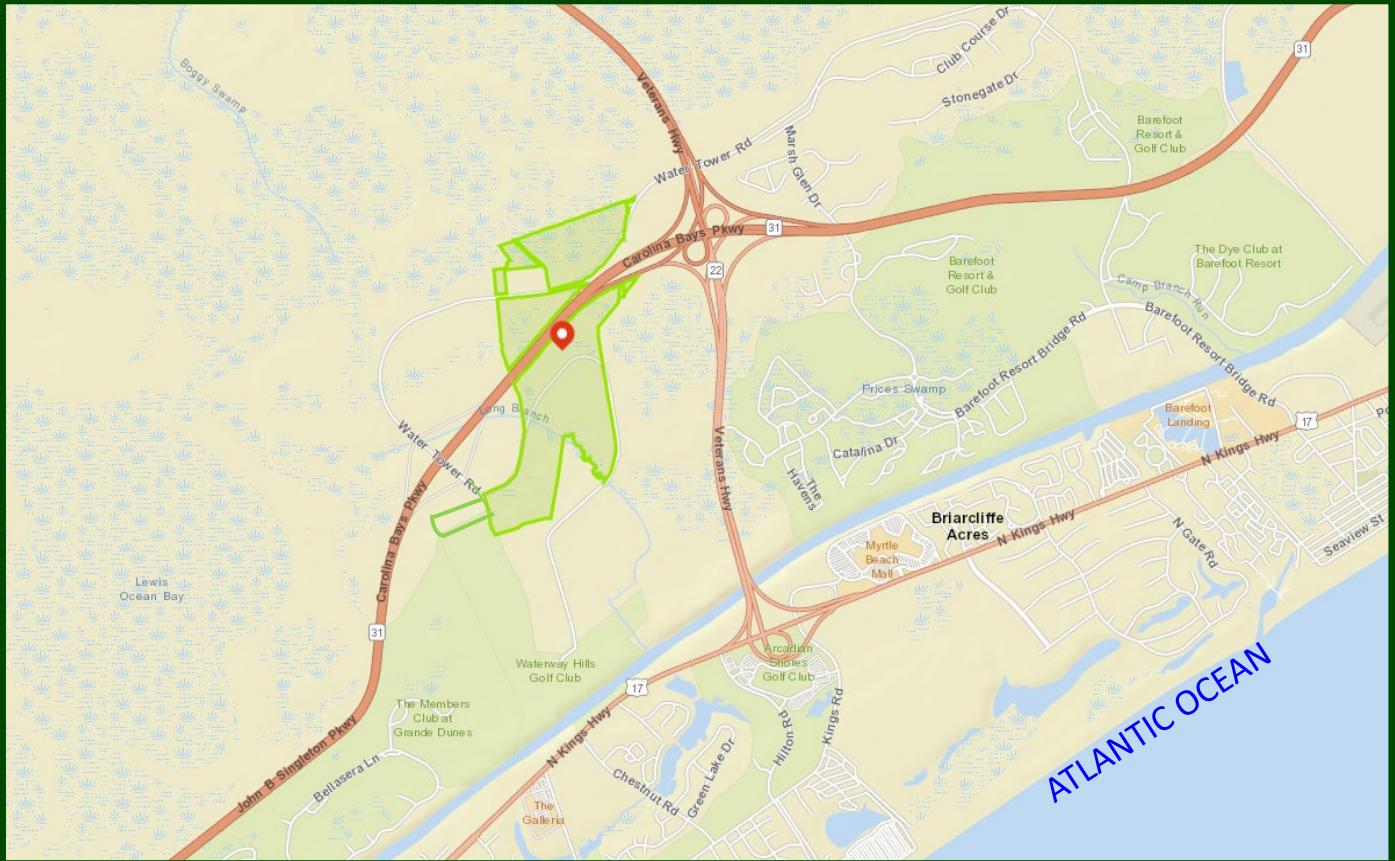
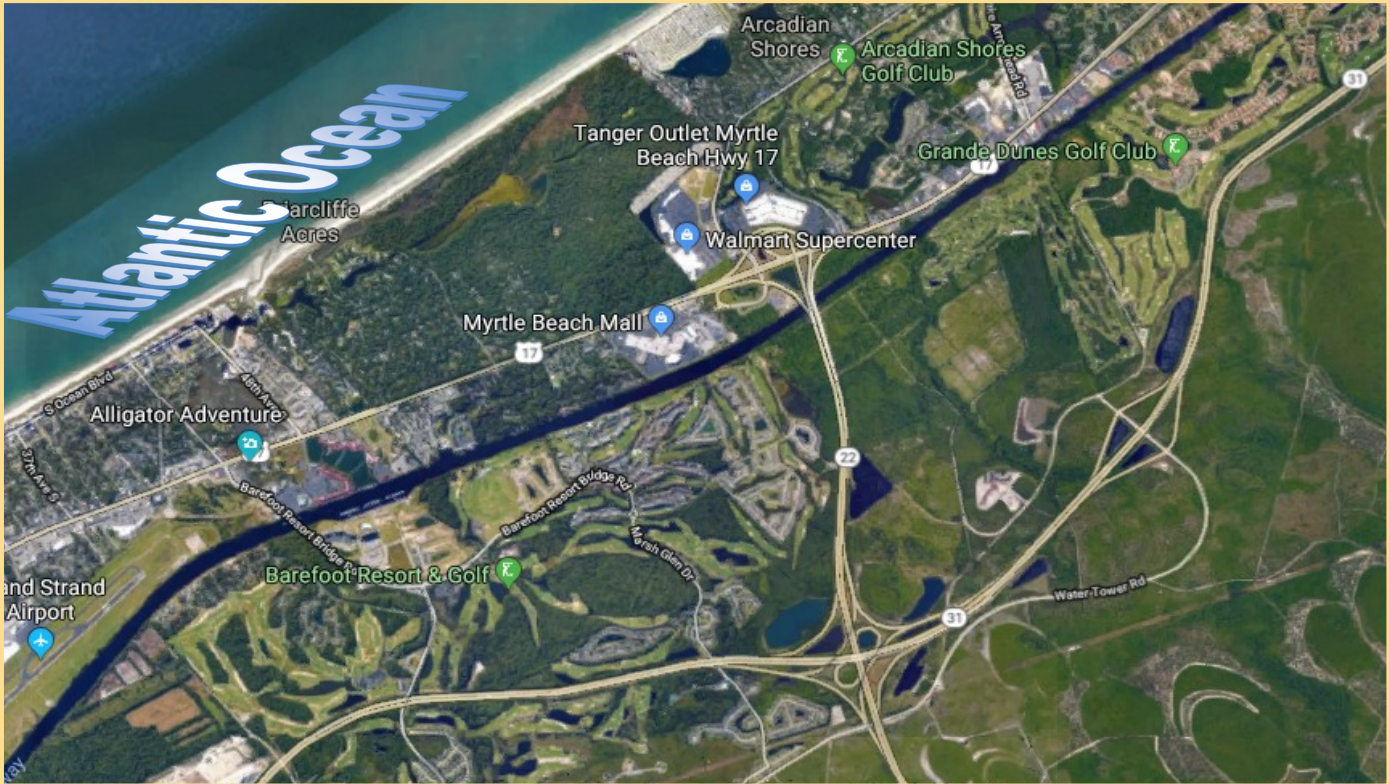


APACHE TRACT



PIN #3890000003 & PIN #38900000234

APACHE TRACT

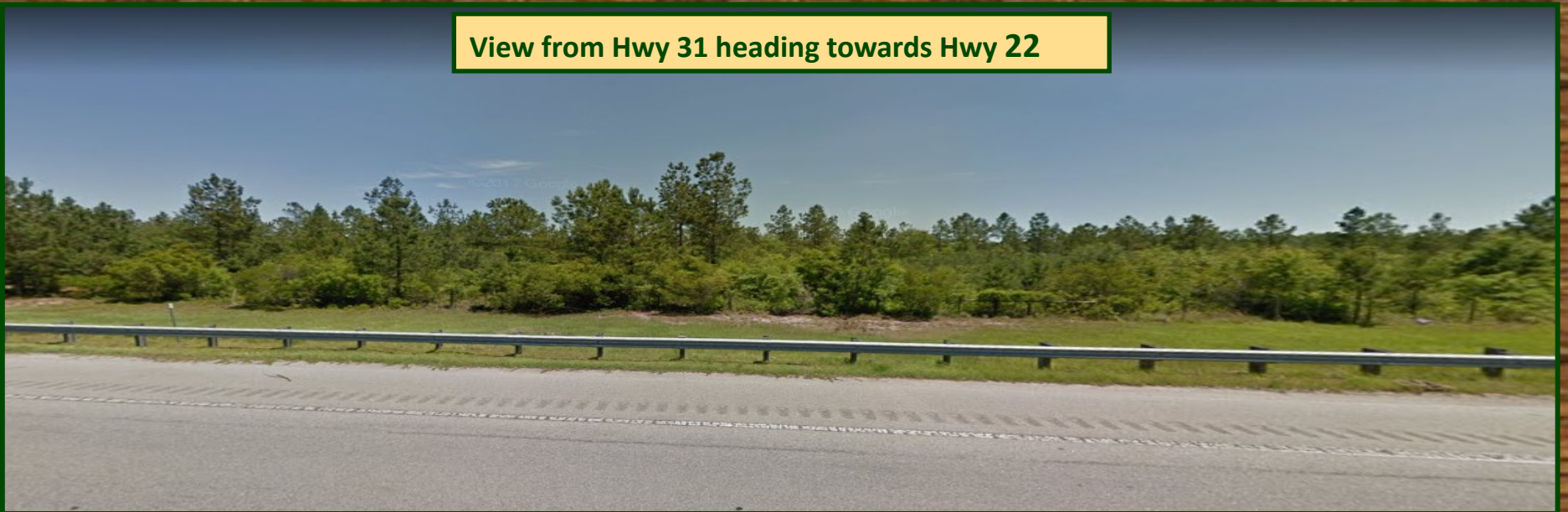


APACHE TRACT

View from Water Tower Road



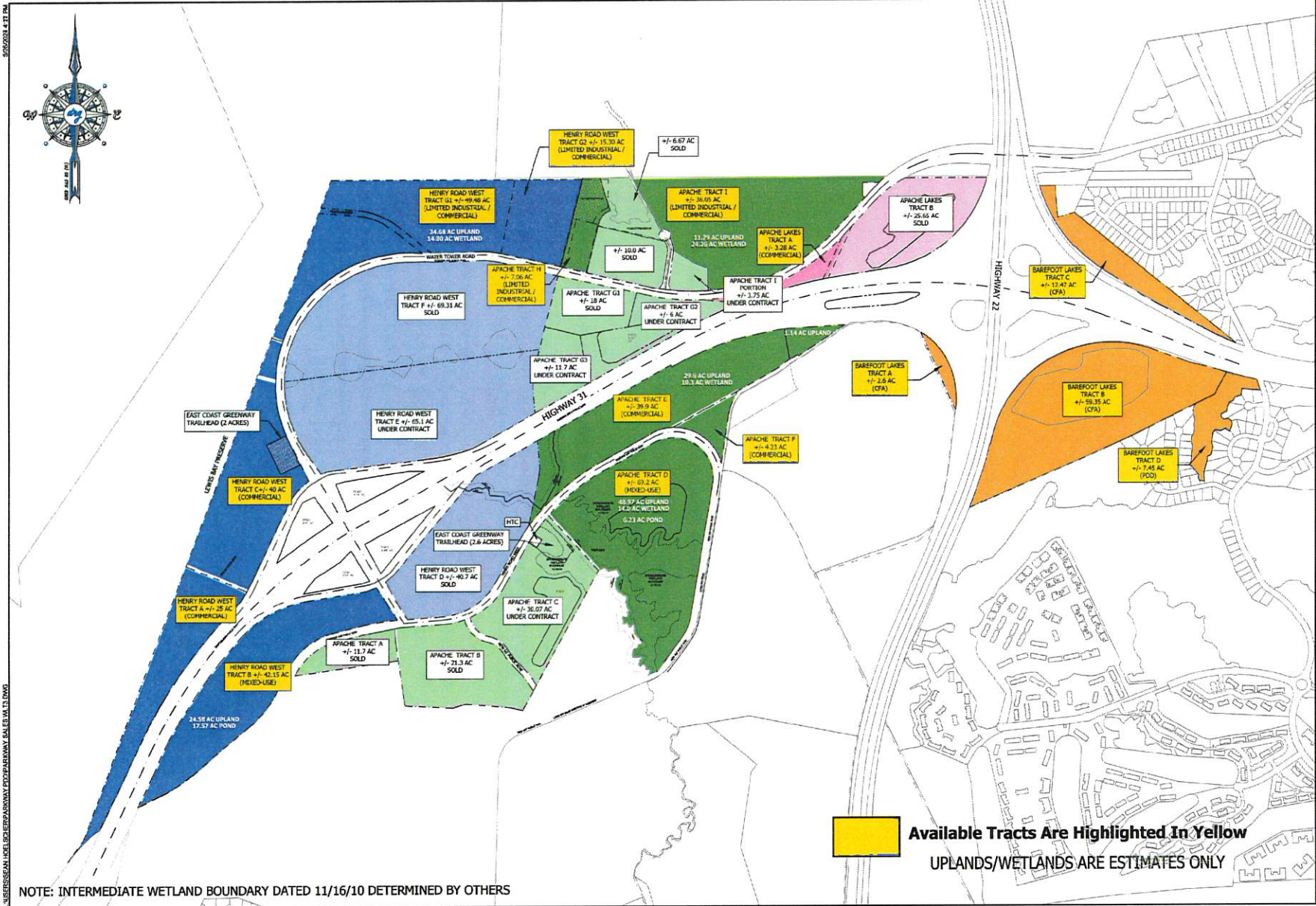
View from Hwy 31 heading towards Hwy 22



5/20/2024 4:37 PM



\\USERS\SRAM\LOCAL\CHERRYPARKWAY\PROJ\PARKWAY_SALES\W.L.DWG



Available Tracts Are Highlighted In Yellow
 UPLANDS/WETLANDS ARE ESTIMATES ONLY

NOTE: INTERMEDIATE WETLAND BOUNDARY DATED 11/16/10 DETERMINED BY OTHERS

drq
 DEVELOPMENT RESOURCE GROUP, LLC
 4703 OLDFATHER DRIVE
 MYRTLE BEACH, SC 29577
 843-669-3366 | DRG@DRG.COM

PARKWAY PARCELS

JOB NO:
 SCALE: 1"=500'
 DRAWN BY: SCH
 CHECKED BY: SCH
 DATE: 03/25/2024
 EXHIBIT NUMBER: