

SEGREGATION REVISIONS

The revision dates below represent the file save dates for the posting of the listed revisions. The archive dates for these revisions are posted within the ARCHIVE REVISIONS box in the drawing title block.

- 04/02/99 - JCJ
53N03W-23-8900 out of 7700 (Y2K)
- 03/07/03 - SLW
Ptn of 53N03W-23-2150, 2200, 2250, 3950 and 7700 out to additional R/W for Parks Rd as Cat 19 (04)
- 05/15/03 - SLW
Ptn of 53N03W-23-1550 and 2350 out to additional R/W for Parks Rd as Cat 19 (04)
- 05/14/08 - ET
Ptn of 53N03W-23-4150 and 4550 out to additional R/W for Parks Rd as Cat 19 (09)
- 06/26/08 - ET
Ptn of 53N03W-23-4000, 4100 and 4600 out to additional R/W for Parks Rd as Cat 19 (09)
- 08/21/08 - ET
Ptn of 53N03W-23-5000 out to additional R/W as Cat 19 (09)

THIS DRAWING IS TO BE USED FOR REFERENCE PURPOSES ONLY, AND THE COUNTY IS NOT RESPONSIBLE FOR ANY INACCURACIES HEREIN CONTAINED.

6	5	4	3	2	1
7	8	9	10	11	12
13	14	15	16	17	18
19	20	21	22	23	24
25	26	27	28	29	30
31	32	33	34	35	36

**KOOTENAI COUNTY
IDAHO**

ARCHIVE REVISIONS		
INITIALS	ACTIVITY	DATE
JCJ TH	CONVERSION GIS CONVERSION	04-02-99 10-27-03

IMAGE FILE: \NOT USED
DRAWING FILE: \533W23.DWG 00-00-00

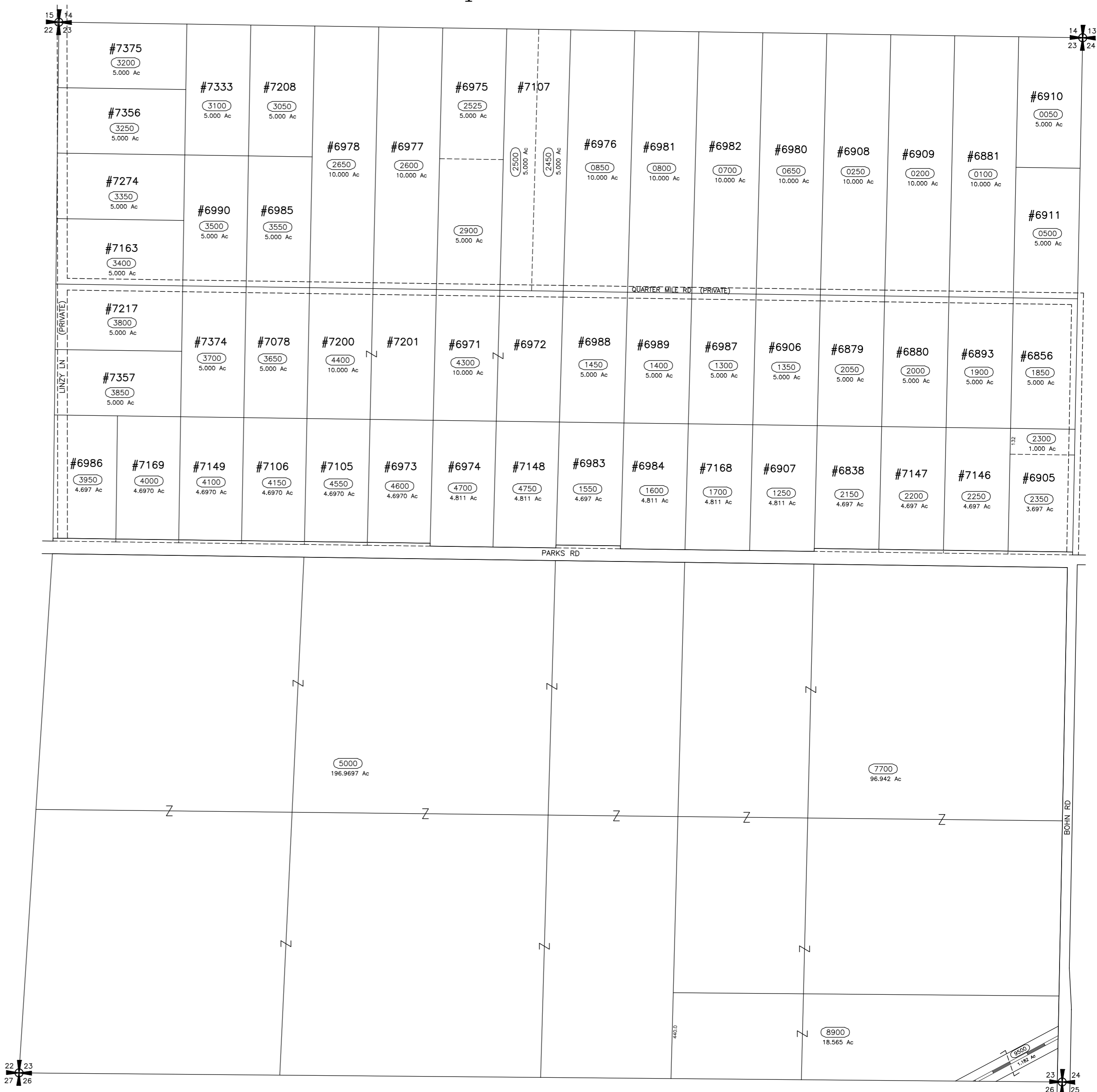
NOTES:
All lots or parcels with given bearings and distances were calculated by traverse closure. All other parcels were calculated by the most accurate means possible with the given information (i.e. length multiplied by width, triangulation, planimeter, scaling from existing map, and coordinate geometry). Acreages shown are net accessible; right-of-way, where applicable, has been removed. Distances and arc lengths less than 50' may not be shown due to space limitations. Dimensions in parenthesis denote record and/or platted lot line dimensions.

LOCATION OF ROADS SHOWN ARE BASED ON ADDRESSABLE ROAD INFORMATION AND MAY OR MAY NOT BE PUBLIC.

Records of Survey used:	
BK/PG	DESCRIPTION

Sec.23 Twp. 53 N. R. 3 W.B.M.

53N03W-23



SCALE: 1 INCH = 400 FEET