

GREENWAY RETREAT

Marion County, FL

REDUCED

McBride Land & Development, Co.

- * 193.90± acre timber tract
- * Good mixture of Pine and Hardwood Timber
- * Completely surrounded by the Cross Florida Greenway and the Ocala National Forest
- * Deeded access through Ocala National Forest
- * Cedar Creek, which leads into the Ocklawaha River, is only a few steps away from property boundary
- * Marion County Tax Parcel ID #16298-000-00
- * Hard to find a piece of property out there like this
- * Good interior road system
- * Being offered whole at only:

\$1,144,010

(\$5,900 per acre!!!)



1553 SE Fort King Street
Ocala, Florida 34471

Phone (352) 401-3755

Fax (352) 401-3757

www.mcbrideland.com



Oak Hammock - Eastern Boundary



Native Habitat



Large Magnolia on interior road



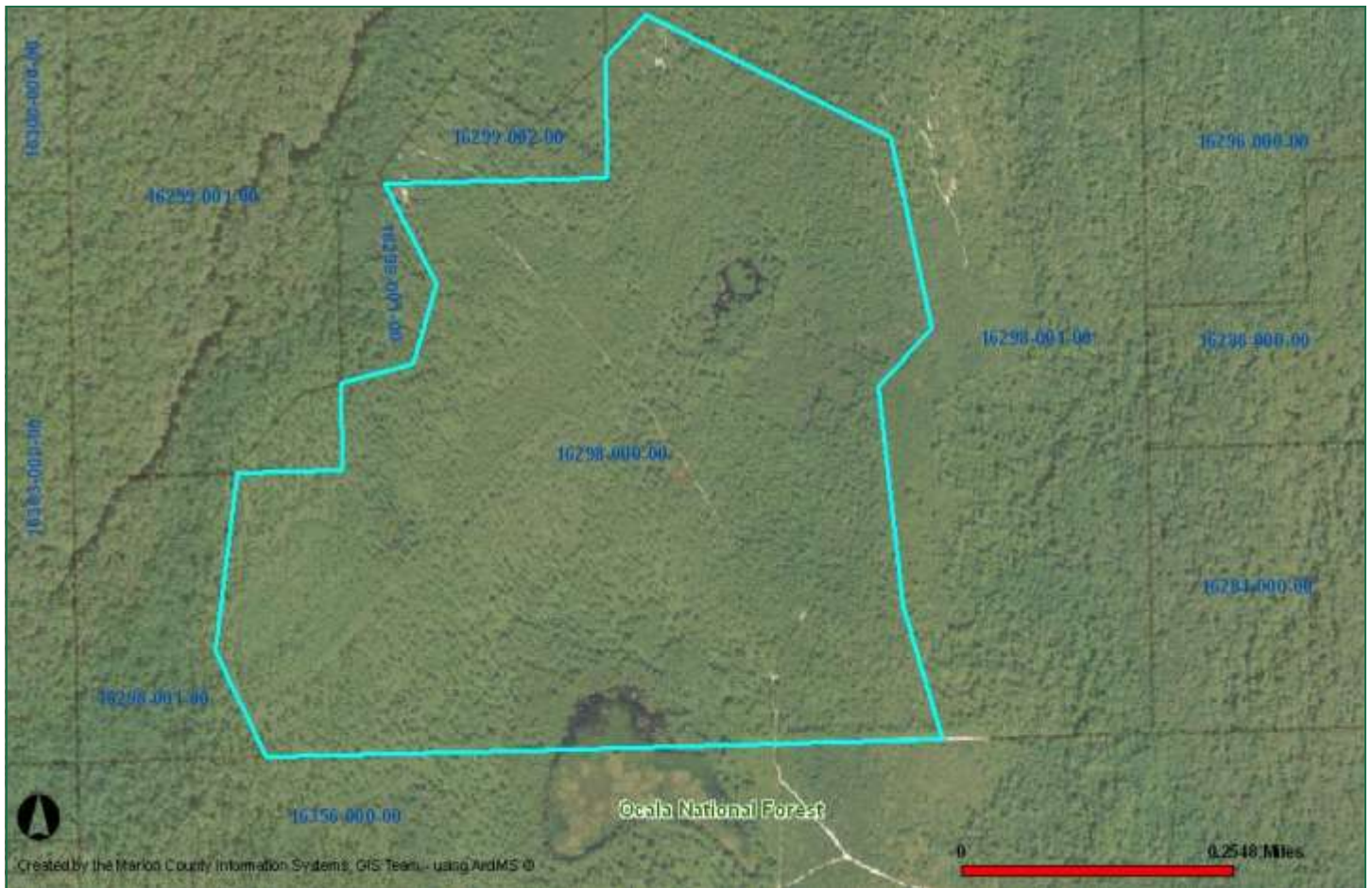
Oak Hammock & palmettos - NW corner



Pines, Oaks, & Palmettos - SE corner



Cedar Creek - just off NW corner

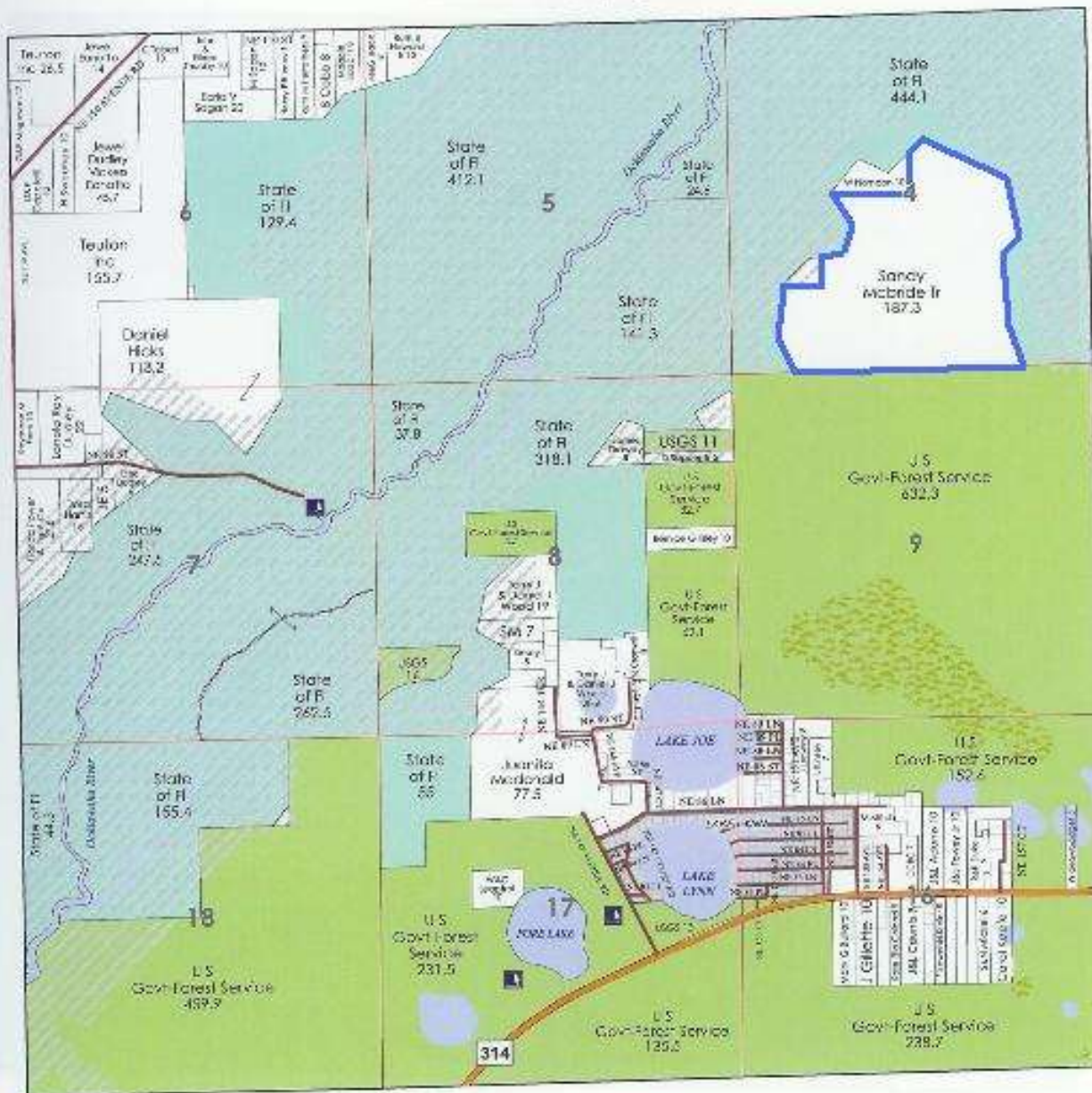


T.14S. - R.24E. (N.W.)



(N.W.)

See T.13S. - R.24E. (S.W.) Page 57



See T.14S. - R.23E. (N.E.) Page 80

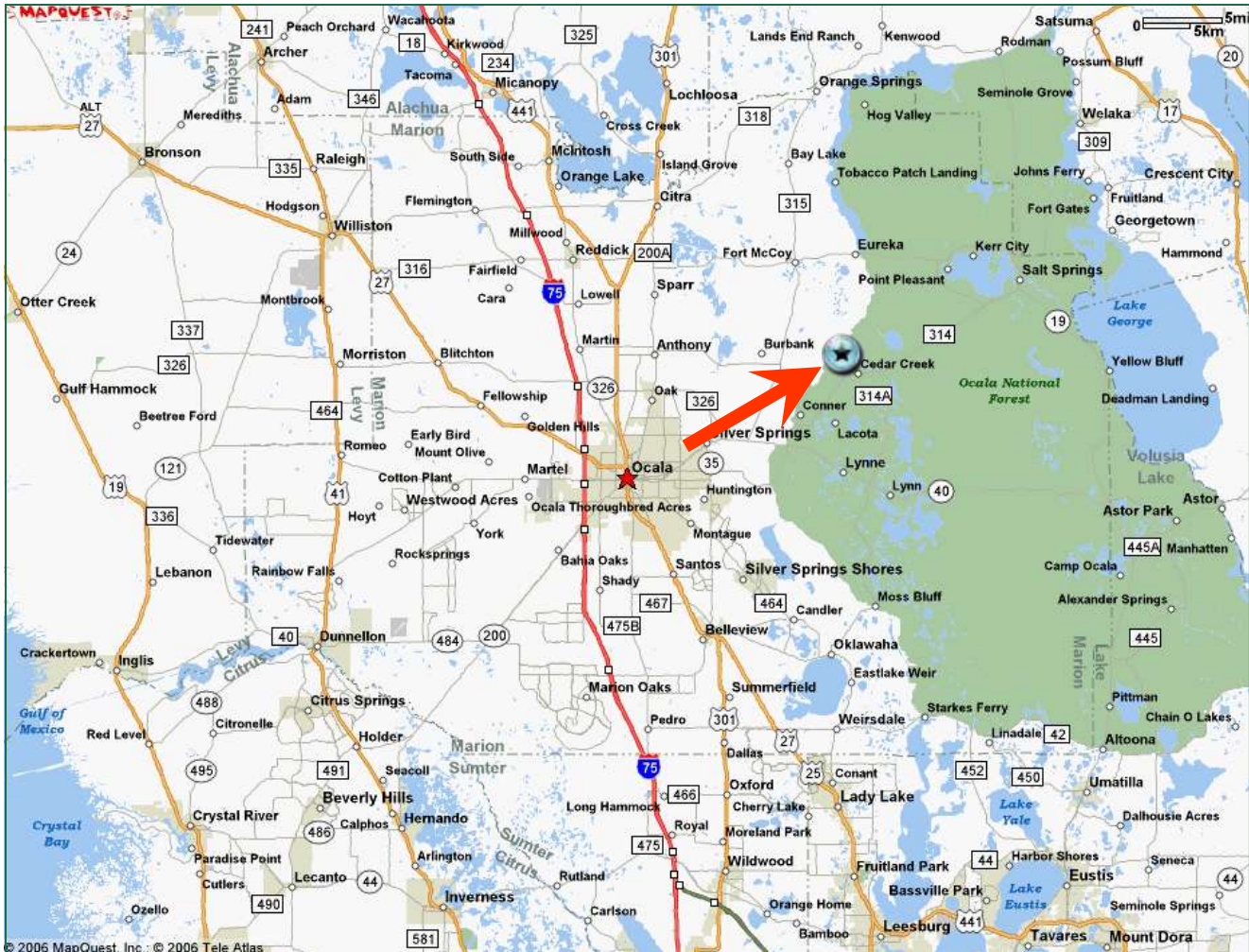
See T.14S. - R.24E. (N.E.) Page 84

See T.14S. - R.24E. (S.W.) Page 85

DIRECTIONS

Greenway Retreat

McBride Land & Development, Co.



From Ocala:

Take SR 40 (aka Silver Springs Blvd) East. Make a Left on Hwy 314 (heading NE). Property entrance located approximately 5 miles on your left. No sign, need to call office if want to see property.